



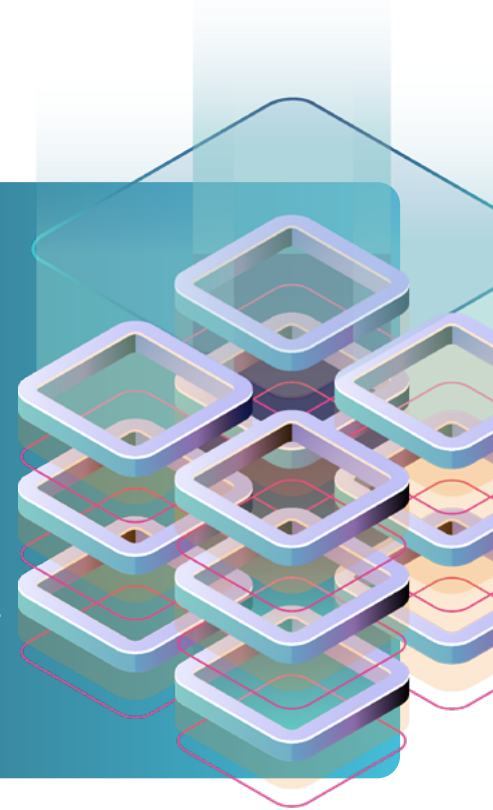
MCP Server

Powering AI environments with structured, trusted and authoritative data

Access the power of Know Your Customer (KYC) automation at every stage of the compliance lifecycle. The EC360 Model Context Protocol (MCP) server securely connects a client's AI environment with corporate digital identity data via the EC360 platform.

This enables your AI agents and language models to perform KYC searches, run compliance policies, check sanctions, and retrieve documents via a single platform.

Embed deterministic, auditable compliance intelligence directly into your AI workflows today.



Flexible integration

The EC360 MCP is simple to integrate with any AI environment.

1

AI tools including Claude, OpenAI, Gemini and more

2

Language models including LLMs

3

A client's own agents

How it works

- 1 A natural language command is entered into a client's own AI platform.
- 2 The client's AI selects the relevant tool from the EC360 MCP toolkit, which executes the required steps.
- 3 EC360 sources data and documents via external data integrations, private client information and/or the client's internal data sources.
- 4 Live results are delivered back to the client's AI platform, complete with full data provenance and audit trail, in seconds.

Client AI Environment

Language models, agents, AI tools

EC360 MCP



Data

Public, private, internal

One platform. Unlimited data integrations. Full control and governance.

MCP toolkit

The EC360 MCP offers a suite of self-describing tools that a client's AI can easily discover and use automatically across the following categories:



Entity discovery and resolution

Search and identify entities across 160+ global registries and the EC360 platform.



Profile and workspace management

Create and manage KYC workspaces, profiles, and corporate identity containers across EC360.



Search and retrieval rules

Trigger automated KYC workflows, execute compliance policy rules, and order vendor data products.



Screening and monitoring

Trigger Run sanctions and PEP checks; configure and manage ongoing entity monitoring for continuous compliance.



Document operations

Retrieve, generate, and extract structured data from registry filings, compliance records, and client documents.



Outreach operations

Manage data collection requests, questionnaire templates, and client onboarding workflows.



Audit, tasks and oversight

Surface compliance tasks, manage workflow blockers, and access audit evidence for regulatory accountability.

Natural language compatible. No API expertise needed.
Results delivered in seconds

Global public, private and internal data

The EC360 platform accesses extensive global data coverage to ensure reliable and accurate information. Source critical KYC and KYB data attributes and documents in real-time, directly from:

- Registries, regulators, and stock exchanges, plus screening, IDV and company business data from leading vendors
- Private data from a client's own digital vault integrated with EC360
- Internal data ingested from the client's own data sources

Key benefits

- Increased efficiency and accelerated client AI programs
- Data accuracy, reliability and reusability
- Full governance and auditability
- End to end ownership and control
- Rapid deployment and time to value with no custom integration required
- Comprehensive security

Enterprise-grade security

 **ISO 27001** and **SOC 2 Type II** compliant

About Encompass Corporation

Encompass enables fast, accurate identity validation and verification of corporate clients, and a gold standard approach to KYC and KYB. Our award-winning corporate digital identity (CDI) platform and innovative solutions incorporate real-time data and documents from authoritative global public data sources and private client information to create and maintain digital risk profiles. By delivering structured data and CDI profiles directly into core banking applications, Encompass powers successful AI initiatives, ensuring insights are accurate and actionable.